

## **Vitalware Documentation**

# **Editing in a single language**

Document Version 1.1

**Vitalware Version 2.3**





# Contents

<b>SECTION 1</b>	<b>Overview</b>	<b>1</b>
<b>SECTION 2</b>	<b>Registry settings</b>	<b>5</b>
	Supported Registry entry	6
	Delimiter Registry entry	8
	Edit Any Language Registry entry	9
	Show Trailing Delimiters Registry entry	10
	Show Empty Delimiters Registry entry	12
	Show First Filled Registry entry	13
	Multiple Languages Registry entry	14
<b>SECTION 3</b>	<b>Options</b>	<b>17</b>
<b>SECTION 4</b>	<b>Editing in a single language</b>	<b>23</b>
	Data entry	24
	Copy and Paste	26
	Searching	27
	Default values	29
	Lookup Lists	31
	Auto Fill	34
	Spell checking	35
	Global Replace	36
	Global Replace: Pattern matching examples	38
	Sorting	44
	Reports	46
	Page View mode	48
	Scheduled Exports	49
	Imports	50
<b>SECTION 5</b>	<b>Index</b>	<b>51</b>



## SECTION 1

# Overview

It has always been possible in Vitalware to store data in multiple languages in the same field. For instance, a client can specify that their data consists of English text followed by French text with a delimiter marking the end of one language and the start of another. The default delimiter is `;;` (i.e. semi-colon colon semi-colon). For example:

```
hat;;chapeau
```

indicates that `hat` is in one language and `chapeau` is in another language.

A number of Vitalware facilities need to understand what languages are used and in what order they are stored. The spell checker, for instance, must be able to determine what languages are available and in what order so that the correct dictionary can be loaded and used against the correct values. Vitalware uses the Supported Registry entry (page 6) to calculate how many languages are supported, what those languages are, and in what order they are stored. For example:

```
System|Setting|Language|Supported|0;1
```

specifies that two languages are supported, English (International) and French (language 0 = English (International) and language 1 = French), and that they are stored in that order.



See the Supported Registry entry (page 6) for details of Vitalware language codes.

Given a data value of `hat;;chapeau` and the previous Registry entry we see that `hat` is in English (International) and `chapeau` is in French.

It is important to understand that the Supported Registry entry also defines the order in which the language data is stored within Vitalware. If the previous Supported Registry entry was changed to:

```
System|Setting|Language|Supported|1;0
```

the value `hat` would then be treated as French and the value `chapeau` as English. When planning to use Vitalware to store multiple languages it is very important to define the order of the languages before entering data into the system. Once data has been entered, any changes to the language order will require existing data to be exported, manipulated (swapping the order of the data) and imported. While this is possible it is far easier to leave the order in which languages are stored unchanged once set.



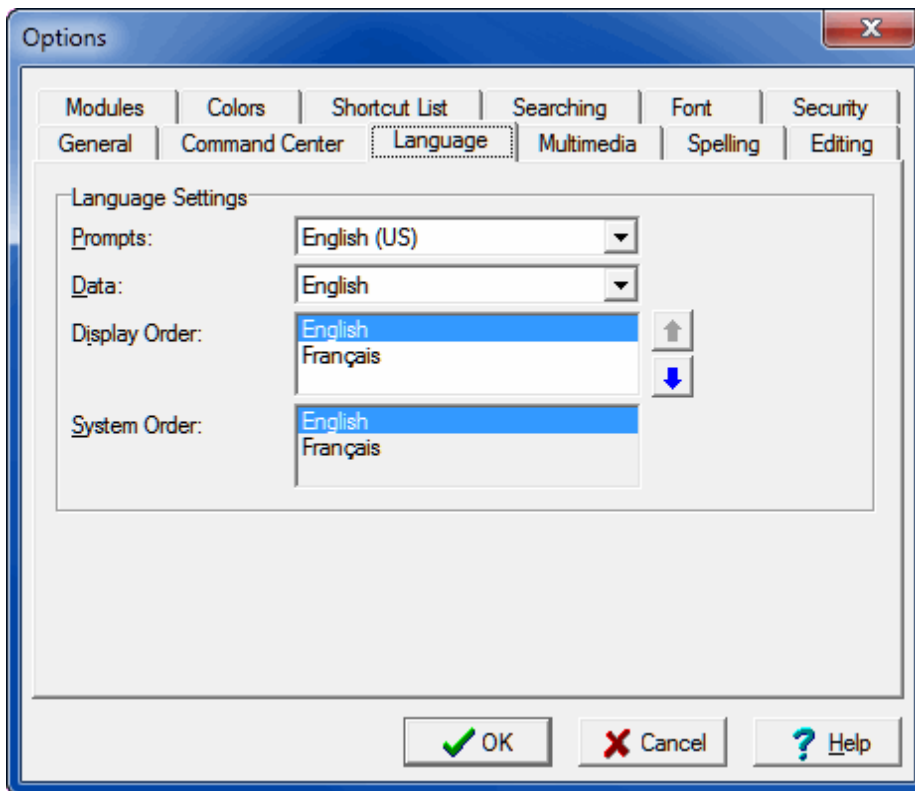
Keep in mind that there is an important difference between the storage and the display of language data in Vitalware: once defined using the Supported Registry entry, the order in which language data is stored in Vitalware cannot be changed easily. As we'll see however, it is a simple matter to change the order in which language data is displayed in the Vitalware client (page 17).

Adding one or more languages is a simple matter however, and only requires adding the relevant language code(s) to the end of the Registry entry. In this case there is no need for any data manipulation. For example, if Arabic support was needed, our earlier Supported Registry entry would simply be changed to:

```
System\Setting\Language\Supported\0;1;12
```

where 12 is the language code for Arabic.

When Vitalware displays data on the screen it can show values for all languages or for an individual language. The setting used to control which languages are displayed is found on the Language tab of the Vitalware Options box (page 17):



If a system only supports one language, the Data drop list and Display Order are disabled. The Data alternatives allow users to decide how data should be displayed within modules in Vitalware. In Vitalware versions prior to version 2.3, if a single language is chosen from the Data drop list, it is not possible to make changes to the data and all controls in a module are disabled. It is only possible to edit or insert data while viewing the data in *All Languages*. This ensures that when editing data, users can view the complete contents of a field while altering it. In effect it forces users to consider all supported languages while entering data.

Vitalware 2.3 has seen the introduction of a number of extensions that provide a more flexible mechanism for displaying and altering data within a single language:

- When the *All Languages* option is selected, users may now select the order in which languages are displayed (but not, it is important to keep in mind, the order in which language data is stored in Vitalware, which is defined by the Supported Registry entry). This allows users who are dominant in a particular language to display this language first with other languages following.

- User may now alter data while a single language is displayed. Any data entered into a field will only update the value of the language selected.
- When displaying data in a single language and a value does not exist for a given field, the value of the first filled language (page 13) may be displayed. The text is shown in a user selectable color (gray by default) to indicate that it is not associated with the current language. When the field is entered, the text is removed, allowing data to be entered.
- A number of data entry helpers always display all languages in the user defined order to assist data entry. For example, if a Lookup List is displayed (page 31), all languages are always shown so that users may select the correct entry based on context. This is particularly important where one term in a given language has multiple terms in another language.

The remainder of this document describes these new features in detail.





## SECTION 2

# Registry settings

Seven Registry entries control how language data is stored and displayed within Vitalware.



With the exception of the Supported Registry entry these entries are only applicable in an Vitalware system that supports more than one language: they have no effect in a single language system.

The Registry entries are:

- Supported (page 6)
- Delimiter (page 8)
- Edit Any Language (page 9)
- Show Trailing Delimiters (page 10)
- Show Empty Delimiters (page 12)
- Show First Filled (page 13)
- Multiple Languages (page 14)

---

## Supported Registry entry

Registry Entry	Purpose
Supported	<p>In a single language environment this entry specifies which dictionary is used for spell checking.</p> <p>In a multi-language environment this entry also specifies a list of supported languages and the order in which data in each language is stored within a field of the database (e.g. English, German, then French). This storage order can differ from the order in which data in each language displays (page 17) in Vitalware (e.g. French, German, then English).</p>

The format of this Registry entry is:

`System|Setting|Language|Supported|#[;##...]`

where:

`#[;##...]` is one or more language codes. If more than one, the codes are separated with a semi-colon.

- 0 English
- 1 French
- 2 English (US)
- 3 Spanish
- 4 German
- 5 Italian
- 6 Dutch
- 7 Danish
- 8 Polish
- 9 Norwegian
- 10 Swedish
- 11 Greek
- 12 Arabic
- 13 Hebrew
- 14 French (CA)
- 15 Finnish

This entry would be suitable for a system that supports Arabic, French and English:

System|Setting|Language|Supported|12;1;0

The order of the languages specified in the entry defines the order in which data is stored within Vitalware. In this example, data will be stored in a field in Arabic, French and then English.



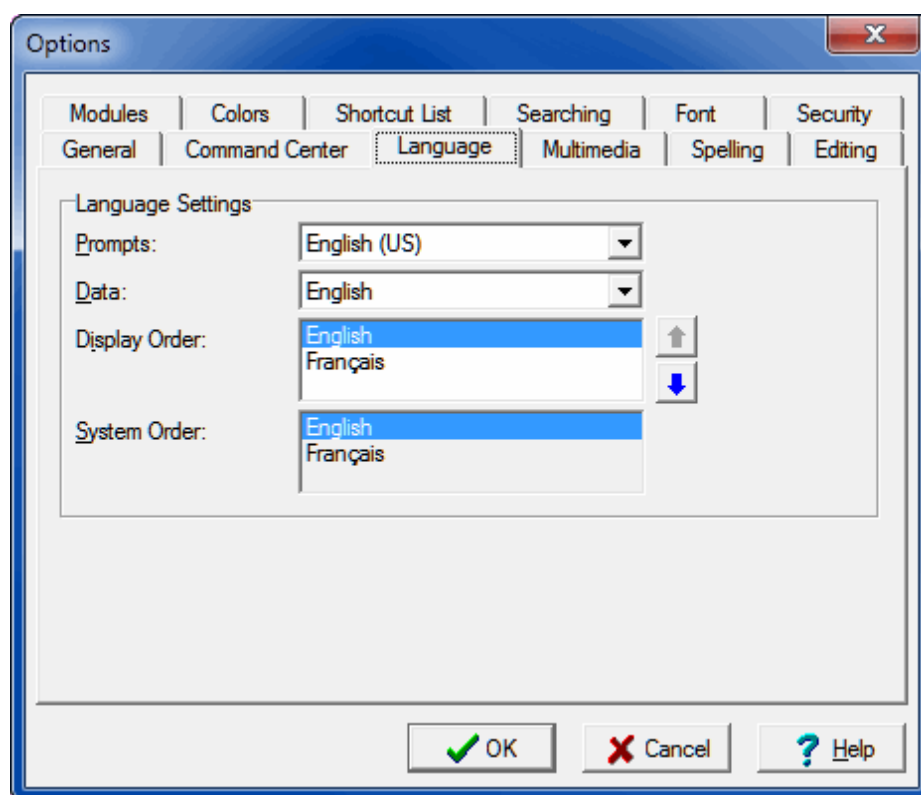
Once data has been entered with a particular order set, it is not recommended that the order is altered. If the order is to be changed, the existing data must be exported, manipulated and reloaded.

The language order defined by this entry is used by a number of Vitalware facilities that are language dependent (e.g. spell checker).



There is no limit to the number of languages that can be specified.

This system order (or data storage order) of languages specified using the Supported Registry entry is displayed on the Language tab of the Options box:



If a system is to operate with only one language, only a single language number is specified. If the Supported Registry entry does not exist, English (International) is assumed by default (language code 0). The following Registry entry would be suitable for an Vitalware system that supports English with USA based variations:

System|Setting|Language|Supported|2



The Supported Registry entry should never be set on a user or group basis.

---

## Delimiter Registry entry

Registry Entry	Purpose
Delimiter	In a multi-language environment this entry specifies the marker used to separate each language in a field.

The Delimiter Registry entry specifies the character sequence that appears between languages. The default sequence is ;:: (semi-colon colon semi-colon). There is no restriction on the length of the delimiter. It is not possible to have the delimiter sequence treated as text, so a sequence should be selected that will never occur in data values.



The delimiter should be set system wide and never on a per user or group basis.

This entry sets the character sequence ### as the delimiter between languages:

System|Setting|Language|Delimiter|###

---

## Edit Any Language Registry entry

Registry Entry	Purpose
Edit Any Language	In a multi-language environment this entry specifies whether users can alter data when a single language is displayed.

By default, when a single language is displayed in a multi-language environment all display controls are disabled (grayed out) and users are not able to alter data. Setting the Edit Any Language Registry entry to `True` allows users to enter values when a single language is displayed. All values updated by the user via the data entry fields only update values for the language currently displaying.



The Edit Any Language Registry entry may be set on a system-wide, per user or group basis.

This entry will enable all users to edit data in a single language:

System|Setting|Language|Edit Any Language|True

Together, the following entries would restrict the ability to edit in a single language to users in group Admin:

System|Setting|Language|Edit Any Language|False

Group|Admin|Setting|Language|Edit Any Language|True

---

## Show Trailing Delimiters Registry entry

Registry Entry	Purpose
Show Trailing Delimiters	<p>In a multi-language environment this entry specifies whether the language delimiter sequence should be displayed for trailing languages when there are no values in the trailing languages.</p> <p>This entry can be used in conjunction with Show Empty Delimiters (page 12) to display every delimiter in every field even if there is no data in the field.</p>

By default, delimiters are not shown for trailing languages when there are no values in the trailing languages. Setting the Show Trailing Delimiters Registry entry to `True` will display the delimiters.

Consider the following data. If we have a system that is configured, via the Supported Registry entry (page 6), to handle two languages and we have a data value of:

Some data

there are two ways the data could be displayed:

Some data  
Some data;;

For the first case the value of the Show Trailing Delimiters Registry entry is `False`. In the second case it is `True`. The screen shot below shows data displayed where the Show Trailing Delimiters Registry entry is `True`.

Notice how all fields that contain a value now have a trailing delimiter. The setting does not apply to empty fields. The primary purpose of this entry is to allow users to append the next language to existing values without the need to enter the language delimiter.



The Show Trailing Delimiters Registry entry only works when All Languages are showing. This entry may be set on a system-wide, per user or group basis.

This entry displays trailing delimiters for users in group Document:

Group | Document | Setting | Language | Show Trailing Delimiters | True

## Show Empty Delimiters Registry entry

Registry Entry	Purpose
Show Empty Delimiters	<p>In a multi-language environment this entry specifies whether or not the delimiter (page 8) will display in an empty field.</p> <p>This entry is used in conjunction with Show Trailing Delimiters (page 10).</p>

This entry is similar to the Show Trailing Delimiters entry (page 10) except that it applies to empty fields rather than fields with values. The following screen shot shows the Show Empty Delimiters Registry entry enabled (set to `True`), along with the Show Trailing Delimiters Registry entry. Notice how the empty fields now display the language delimiter sequence:

Enabling this Registry entry allows users to enter values into empty fields without the need to enter the language delimiter sequence between values.



The Show Empty Delimiters Registry entry may be set on a system-wide, per user or group basis.

This entry displays delimiters in empty fields for users in group Document:

Group | Document | Setting | Language | Show Empty Delimiters | True



## Show First Filled Registry entry

Registry Entry	Purpose
Show First Filled	In a multi-language environment this entry specifies whether to display data in the first language that has data if there is no data in the display language selected.



This entry only has meaning when a single language is displayed. If `All Languages` is in effect, this entry is ignored.

The entry applies to fields that do not contain any value for the display language, but a value is specified in another language. If the Show First Filled entry has a value of `True`, the first language found to contain a value, as defined by the user's language order (page 17), will be shown. If the entry is set to `False`, a blank field is shown. When the first filled value is displayed, it is shown in a different color to distinguish it from values that exist for the current language. The default value for this Registry entry is `False`.

This screen shot shows a Parties record that has been entered in English only. The user has chosen to display French data only. If the Show First Filled entry is set to `False`, the tab will appear completely empty except for the *Party Type* value. As the Registry entry has been set to `True`, the English values are displayed where a French value is empty and an English value is available. The English values are displayed in gray (this can be configured to any color) to indicate that the data is not French:

When a user enters a control containing the English value, by either clicking on the control or using the keyboard to navigate to it, the value is removed. Once the field is exited and a value has not been entered, the English value is displayed again. The image below shows an empty *First: (Person Details)* field as the user has entered the field:



The Show First Filled Registry entry may be set on a system-wide, per user or group basis.

In general, it is recommended that this setting is enabled as it allows users to see values for empty fields where a value has been specified in another language.

This entry enables the display of the first filled language for all users:

System|Setting|Language|Show First Filled|True

## Multiple Languages Registry entry

Registry Entry	Purpose
Multiple Languages	Specifies whether a field is multilingual and therefore affected by the other Language Registry entries.

The Multiple Languages Registry entry provides a mechanism for defining whether a field is multilingual. If a field is not multilingual, the field's contents are unaffected by these other Language Registry entries:

- Supported (page 6)
- Delimiter (page 8)
- Edit Any Language (page 9)
- Show Trailing Delimiters (page 10)
- Show Empty Delimiters (page 12)
- Show First Filled (page 13)

Each Vitalware module has a number of fields defined to support multilingual values. System Administrators may adjust the list of multilingual fields to suit their needs.

The format of this Registry entry is:

```
Group|groupname|Table|table|Multiple Languages|column|value
Group|Default|Table|table|Multiple Languages|column|value
Group|Default|Table|Default|Multiple Languages|column|value
```

where:

- groupname* may be used to restrict the persons to whom the Registry entry applies. In general, group `Default` should be used as a field is either multilingual or not, regardless of the person accessing it.
- table* is the name of the table that contains *column*. If the column is common to all modules, `Default` may be used.
- column* is the name of the column to which the setting is to be applied. The column name for a given field can be determined by using the **What's this help?** facility. The Column value under the Field Information section contains the required name. See the screen shot below, where *column* is `NamLast`.
- value* is `True` (the field should support multiple languages) or `False` (the field should not support multiple languages).



The **What's this help?** information displays not only the column name, but also whether the field supports multiple languages. The Multilingual setting under the *Display Information* section displays `Yes` if the field supports multiple languages.

The following entries turn off support for multiple languages in the *First*, *Middle* and *Last* name fields in the Parties module:

Group|Default|Table|eparties|Multiple Languages|NamFirst|False

Group|Default|Table|eparties|Multiple Languages|NamMiddle|False

Group|Default|Table|eparties|Multiple Languages|NamLast|False

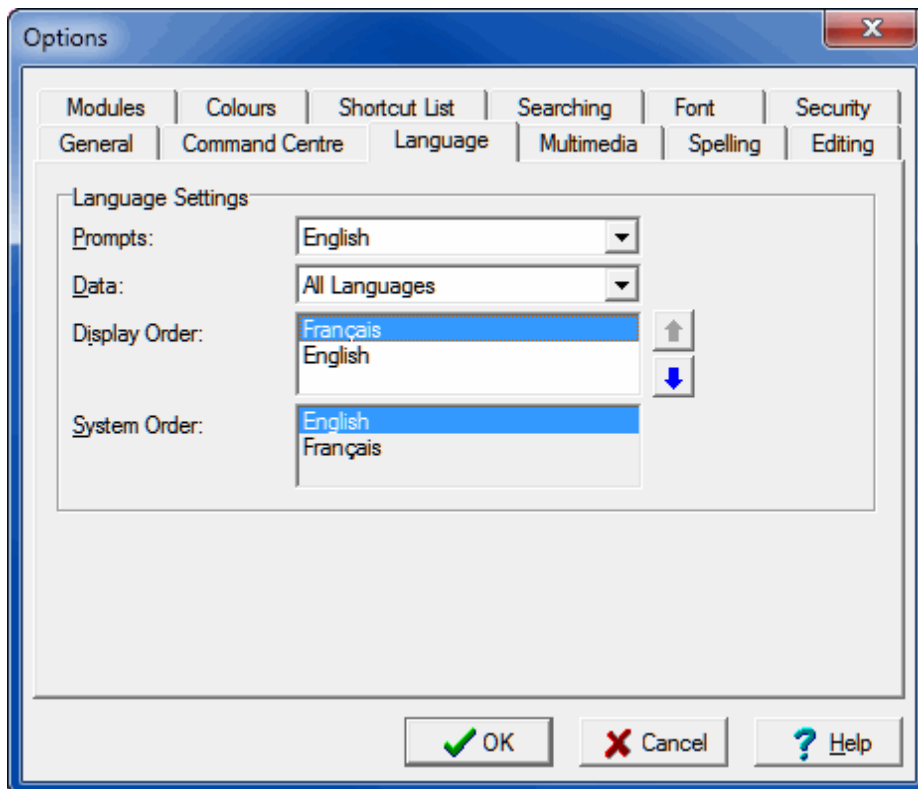


## SECTION 3

# Options

The Language tab in the Options box has been extended to allow the order in which languages are displayed to be specified. The Display Order list box lists each supported language. Select a language in the Display Order list and use the arrow buttons beside the list to change the order in which data in each language displays in the Vitalware client.

When *All Languages* is selected from the Data drop list, it is possible to specify the order in which languages are displayed in fields in the Vitalware client. For instance, if the supported languages are English and French, the following setting specifies that values in French will display before their translation in English:



This would give us prompts in English, displaying all data with French data displaying before the English translation (e.g. `French;;;English`):

Parties (1) - Display

File Edit Select View Tools Process Tabs Multimedia Window Help

WOOD, GERARD - MUSÉE CANADIEN DES CIVILISATIONS::WOOD, GERARD - CANADIAN ML 112

Party Details

Party Type: PERSONNE::PERSON

Invoice Frequency

☐ Immediate ☐ Occasional ☒ Not Applicable

Registration Details

Registration No.: Registration Date: Cancellation Date:

Organization Details

Organization: MUSÉE CANADIEN DES CIVILISATIONS::CANADIAN MUSEUM OF CIVILIZATION

Organization Type: Account Number:

Department: RECHERCHE ET COLLECTIONS::RESEARCH AND COLLECTIONS

Branch:

Section:

Position:

Signing Authorities

Names: \* Acronym:

Person Organization Address Roles Associations Notes Multimedia Ser

Display Party 4 of 18 vw Management 50025

However, the following setting is also useful:

Options

Modules Colours Shortcut List Searching Font Security

General Command Centre Language Multimedia Spelling Editing

Language Settings

Prompts: English

Data: English

Display Order: English Français

System Order: English Français

OK Cancel Help

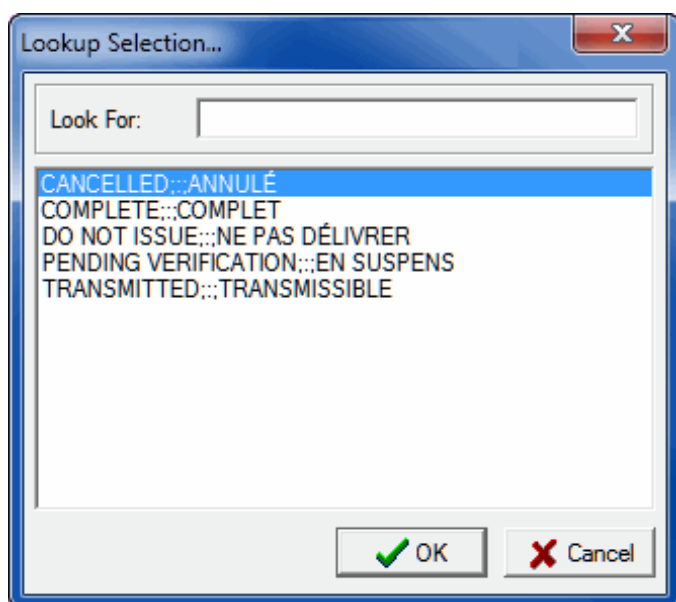
To assist with data entry, various facilities in a multi-language version of Vitalware always show strings with all languages even if a single language is selected in the Data drop list. For

example, if a Lookup List box is displayed, all languages are always shown so that users may select the correct entry based on context. This is particularly important where one term in a given language has multiple terms in another language. For example, the French word *voiture* may be translated to English as *car*, but also as *carriage* (as in a train carriage). As such there are two possible Lookup List entries for *voiture*, namely:

```
voiture;;;car  
voiture;;;carriage
```

If the Lookup List only displayed the French entries when French is the data language selected, it would not be clear which variant was required. By showing all languages it is possible to decide which entry is correct.

Language data in these facilities is displayed in the order specified in the Display Order drop list. Based on the Language Settings shown in the last screen shot, prompts and data will display in English, and in a Lookup Selection box English data will display before the French translation:



In general, when a single language is selected for displaying Data, the same language should appear first in the Display Order list.

Each of the Language Settings options is described below:

Prompts	The language selected here determines what language is used to display text. The only text not affected by this setting is data, where data consists of values entered into the system. The setting also affects how dates containing month names are displayed. The Prompts drop down list contains a list of all languages supported by Vitalware. Hence it is possible, but not every useful, to display text in Spanish even though you do not store Spanish data!
---------	------------------------------------------------------------------------------------------------------------------------------------------------------------------------------------------------------------------------------------------------------------------------------------------------------------------------------------------------------------------------------------------------------------------------------------------------------------------------

Data	The Data setting determines what language should be shown for values that have been entered into the system. A user may select a single language (e.g. English) or <i>All Languages</i> . The list of languages selectable is those specified by the Supported Registry entry.
Display Order	The Display Order list contains an entry for each language supported by the system. The list can be adjusted to reflect the order in which each language should be displayed when showing a value in all languages.
System Order	The System Order list displays the supported languages in the order defined by the Supported Registry entry (page 6). The System Order defines the order in which data is stored in Vitalware. It also defines the order in which data must be submitted for importing (page 50) into Vitalware.

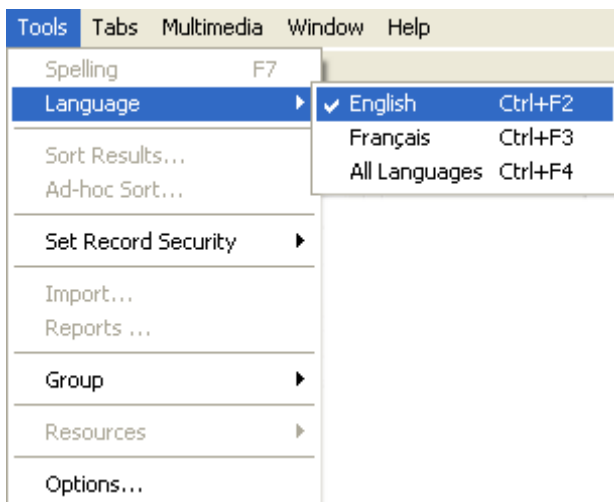


Since the order is defined by a Registry entry it cannot be adjusted via the Options box.



If Vitalware is configured to support only one language, both the *Data* and *Display Order* controls are disabled. The *Prompts* control is always available.

Vitalware also provides a quick mechanism for switching languages without the need to display the Options box. Under the **Tools** menu in any open Vitalware module there is a **Language** sub-menu. The menu is built dynamically and contains an entry for each data language supported by the system, along with the *All Languages* entry (the list is the same as that shown by the Data control in the Options box):



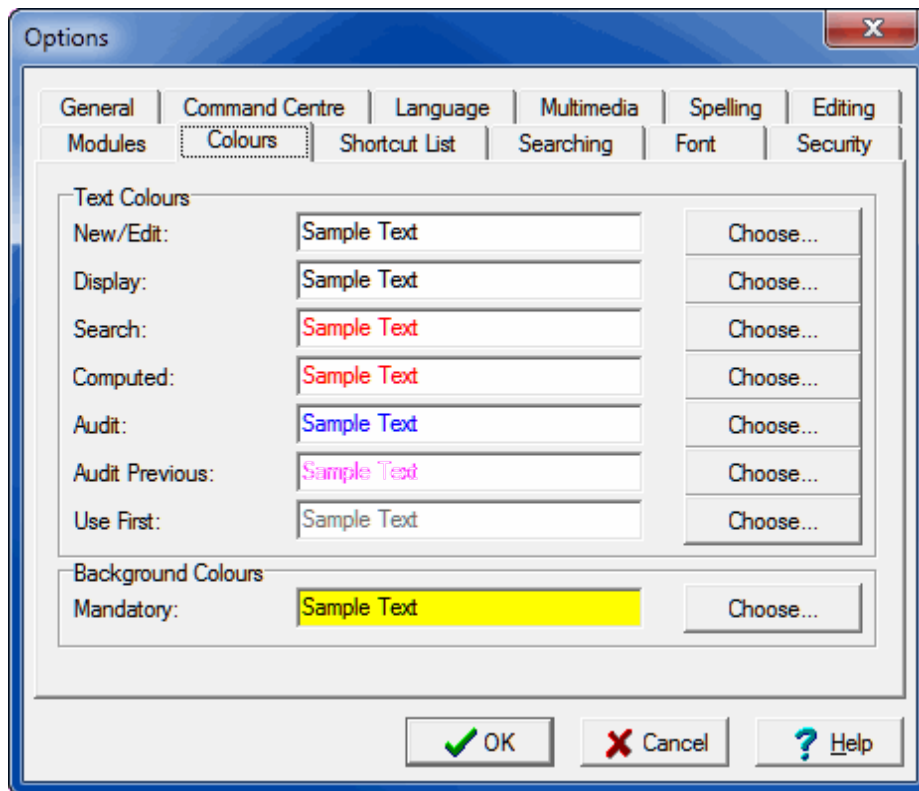
Selecting a language from the sub-menu has the following effects:

- Changes Prompts to the language selected. If the *All Languages* data option is selected, Prompts are not modified.
- Sets Data to the language selected.
- Adjusts the Display Order so that the selected language is the first in the list. If the *All Languages* data option is selected, the display order is not adjusted.



The Language sub-menu does not allow all possible combinations of Prompts, Data and Display Order options to be set, however it does provide the most common alternatives. If further tuning of the settings is required, the Options box should be used.

An option has been added to the Colors tab in the Options box, allowing the color used to display the text for the Use First filled value to be specified:





## SECTION 4

# Editing in a single language

In this section we look at how specific functionality in a multi-language Vitalware environment changes when editing in a single language:

- Data entry (page 24)
- Searching (page 27)
- Lookup Lists (page 31)
- Auto fill (page 34)
- Default values (page 29)
- Spell checking (page 35)
- Replace (page 36)
- Sorting (page 44)
- Reports (page 46)
- Scheduled Exports (page 49)
- Imports (page 50)
- Copy and Paste (page 26)
- Page Mode (page 48)

---

## Data entry

Processing of data by Vitalware always uses the full data value, that is the complete text as displayed when the `All Languages` option is selected. Data is always stored in the order defined by the Supported Registry entry (page 6). When data is displayed however, Vitalware looks at the current Language Settings (specified on the Language tab of the Options box (page 17)) and adjusts the data to reflect those settings: each control makes the necessary text adjustments when displaying their data.

The following controls allow the display and editing of data in a single language:

- Single value input controls (RichEdit), e.g. text fields
- Single value selection controls (ComboBox)
- Multi-value input controls (LinkGrid)
- List View (ListGrid)
- Shortcuts Panel (Shortcuts)

The following functionality applies for data entry in a single language:

- When editing data in a single language, it is not possible to enter data for other languages.

In other words, if `All Languages` has not been selected as the data language setting, it is not possible to enter the language delimiter followed by more text: if the language delimiter followed by more text are entered, they are removed. For example, if the data language in an English/French system is set to English and `hat;;chapeau` is entered into a field, `;;chapeau` will be removed by the system, leaving `hat` in the field.

In the case where `All Languages` is selected for the data language, any language delimiters and text exceeding the number of supported languages will be removed. For example, if `hat;;chapeau;;hut` is entered into an English/French system, `;;hut` will be removed as only two languages are supported.

- Text entered into a control only affects the current language. If a field contains the data `hat;;chapeau` and the data language is set to English, then the field's control will display the text `hat`. Any changes made to the text only affect the English part of the data. For example, if `hat` is changed to `bonnet` and the record is saved, the field's data would now be `bonnet;;chapeau`. If the field has a Lookup List associated with it, the user making the change will be prompted to accept the new entry `bonnet;;chapeau`. Clearing the contents of the field only clears the text for the data language selected. For example, if a field contains `hat;;chapeau` with the data language set to English, then the field's control will display `hat`. If the field is cleared and the record saved, the field's data will be `;;chapeau` as only the English component was removed. If the Show First Filled Registry setting is enabled (page 13), any French values will be displayed in gray (by default) if the English text is removed.
- The **Edit>Clear** command may be used to remove the value for a field regardless of the data language selected. As mentioned in the previous point, removing the text from a control only clears the value for the current data language. In some situations it may be necessary to remove the contents for all languages. The **Edit>Clear** command provides this functionality. A keyboard shortcut of `Ctrl+Del` is also available.

- When the data for a given field is saved, any trailing language delimiters are removed. For example, if there is a data language setting of `All Languages` on an English/French system and `hat;;` is entered, the trailing language delimiter will not be stored in the system. The control may still display the delimiter if the Show Trailing Delimiters Registry entry (page 10) is enabled.

---

## Copy and Paste

Copy and Paste provides a convenient mechanism for moving data between controls.

The following functionality applies when copying and pasting data:

- When copying text, only the text displayed on the screen is placed on the clipboard. In other words, the Data and Display Order settings (specified on the Language tab of the Options box) determine what data is copied.
- The previous point applies for all controls. For example, in an English/French system displaying French text only, selecting a line in a grid and pasting it into another row (or grid) only copies the French text. Any English text will not be copied into the new row.
- When records are copied from List mode into a third party application (e.g. Excel), the data pasted will reflect the current Language Settings. In particular, when copying records into a third party application and then importing them back at a later time, it is vital that *All Languages* is specified and that the Display Order is the same as the System Order, which is easily checked on the Language tab of the Options box (page 17).

## Searching

The data for a given field is stored in Vitalware in the order defined by the Supported Registry entry (page 6). The language delimiter, as defined by the Delimiter Registry entry (page 8), is stored between the text for each language, and any trailing language delimiters are removed. Hence the value stored is a single string consisting of all the language values.

The following functionality applies to searching:

- When entering values as search terms, the Data language setting (specified on the Language tab of the Options box) is ignored. Search terms may be entered in any language and Vitalware will locate all records that match the terms entered regardless of the language in which the term appears. For example, in an English/French system, if a field contains the data:

```
cellulose tape;;;a ruban de cellulose
```

entering a search term of `tape` will return the record regardless of the Data language setting. Similarly, entering a search term of `ruban` will also return the record. A search term of `cellulose` will find the record and highlight both the English and French word `cellulose` as matching.

- It is not possible to search for a term in a single language only using the standard query tabs.

If a user has the `daEditQuery` operational privilege (see Operations Registry entry in the Vitalware Help), it is possible to adjust a query statement to restrict a search to a given language. For example, if searching for all records in a module in an English/French system where `cellulose` is mentioned in English but not in French, the required query statement is:

```
select all
from emodulename
where true and
(
    fieldname contains 'cellulose'
)
and not
(
    fieldname like '*;;;*'
)
```

In other words, we want to find all records where *fieldname* has the word `cellulose` but does not have the string `;;;` in it. Since the data is stored as English followed by French and trailing language delimiters are removed, the query looks for records that contain `cellulose` without a language delimiter, and as English is the first language, it is only searching English data. It is important to note that the query is based on the data occurring in the order defined by the Supported Registry entry (page 6).

Assume we want to find all records in a module where `cellulose` is mentioned in French but not in English. In this case we want to find the word `cellulose` after a language delimiter. The required query statement is:

```
select all
from emodulename
where true and
(
  fieldname contains 'cellulose'
)
and
(
  fieldname like '*;;*cellulose*'
)
and not
(
  fieldname like '*cellulose*;;*'
)
```

In other words, find the term `cellulose` somewhere after a language delimiter and also where `cellulose` does not appear before a language delimiter. In general, the query `like` operator can be used, in combination with the `not` operator to restrict which parts of a field's text are matched.



If you require further help with building the correct query, please contact Vitalware support staff.

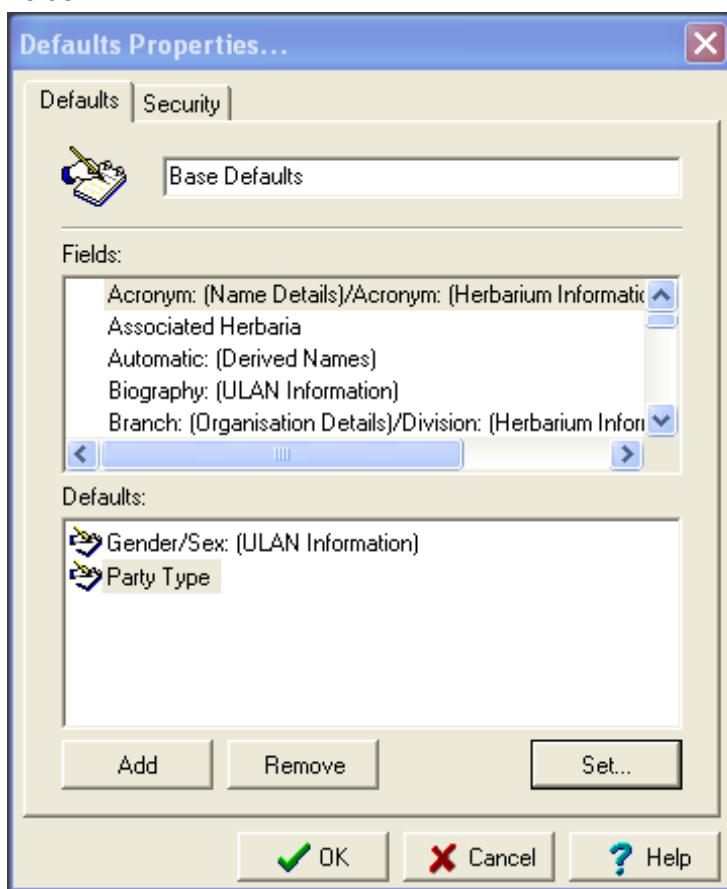


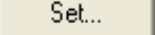
## Default values

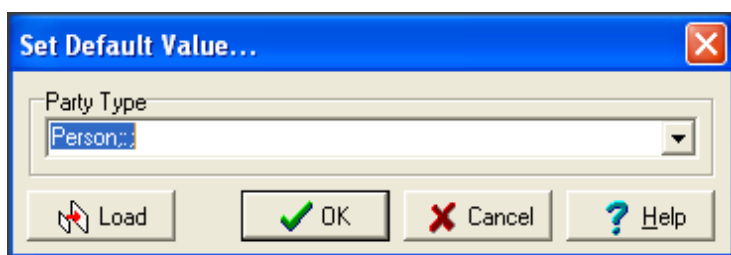
Vitalware allows users to set default values for searching and also for record creation. In the case of record creation the default values are loaded before the user begins entering information. The default values loaded should contain data for all languages to ensure users can view the data regardless of their data language setting.

The following functionality applies to setting default values:

- The Default Properties box allows users to select fields and set default values on those fields:



Clicking  displays the Set Default Value box. The layout of the box depends on the control type selected. For example, the *Party Type* field in the Parties module is a drop down list for data entry. When setting a default value for this field, the Set Default Value box contains a drop down list:



The control displayed in the box operates in the same way as the control within the module, except that the data for all languages is displayed. The data is displayed as defined by the Display Order setting (specified on the Language tab of the Options box). Data entered for default values should be recorded in the same order as the Display Order setting.

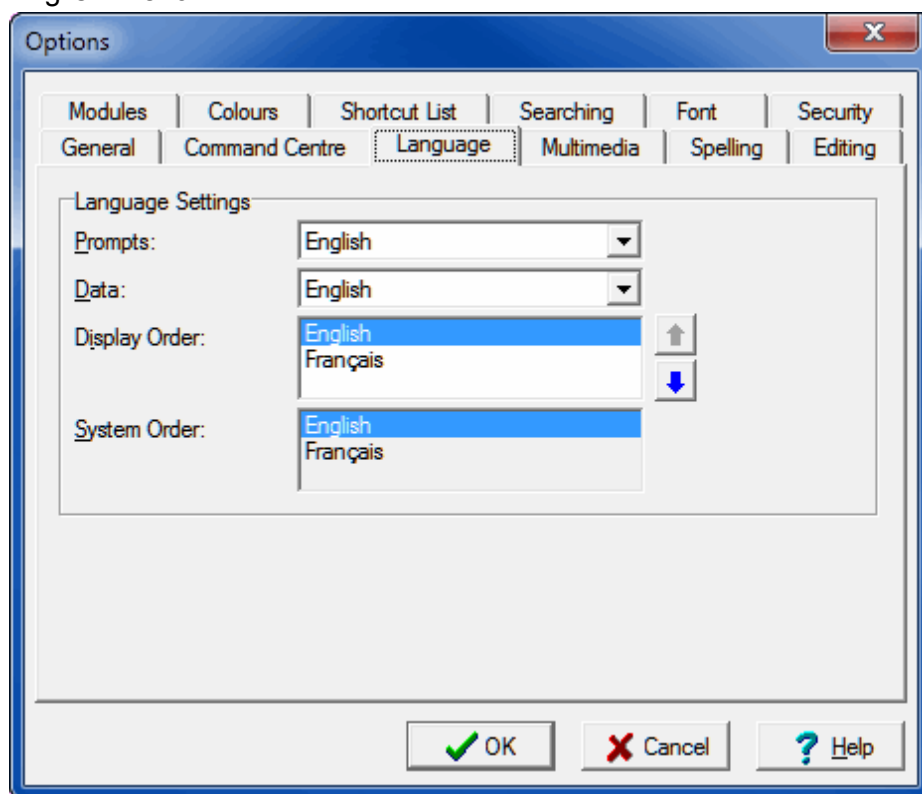
---

## Lookup Lists

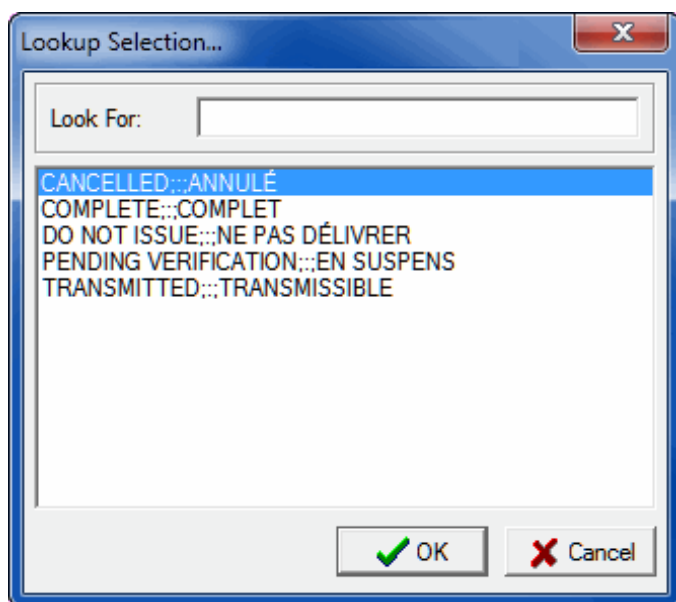
The following functionality applies to Lookup Lists:

- Lookup Lists always display their entries in all languages regardless of the current Data language setting (specified on the Language tab of the Options box). The order in which the languages are displayed is determined by the Display Order language setting (page 17).

For example, in an English/French system in which the Display Order setting is set to English/French:



the entries in a Lookup List will be displayed with the English text followed by the French text. The list will be sorted in alphabetic order in English:



The reason for always displaying all languages for Lookup List entries is because a term in one language may have multiple terms in another language. For example, the French word `voiture` may be translated to English as `car` but also as `carriage` (as in a train carriage). As such there are two possible Lookup List entries for `voiture`, namely:

```
voiture;;car
voiture;;carriage
```

If the Lookup List only displayed the French entries when French is the data language selected, it would not be clear which variant was required. By showing all languages it is possible to decide which entry is correct.

- Leading letters may be used to restrict the list of lookup entries displayed. Leading letters may be specified for any language regardless of the data language setting. For example, in an English/French system in which Display Order is set to French/English, the following applies:

Text Entered	Functionality
<code>voit</code>	All Lookup List entries where the French text begins with <code>voit</code> are displayed.
<code>;;car</code>	All Lookup List entries where the English text begins with <code>car</code> are displayed.
<code>voit;;carr</code>	All Lookup List entries where the French text begins with <code>voit</code> and the English text begins with <code>carr</code> are displayed.



The order of the terms entered is dependent on the Display Order setting (specified on the Language tab of the Options box) and is not affected by the language order setting specified in the Supported Registry entry.

- When an entry is selected from a Lookup List the value for `All Languages` is set regardless of the Data language setting (specified on the Language tab of the Options box). Hence the Lookup List entry replaces the text for all languages for the given field.
- When a new value is entered into a Lookup List field and the record is saved, the

message box that prompts for confirmation of the new entry displays the Lookup List entry text in all languages in Display Order. Hence the complete entry can be checked before confirmation is given.

---

## Auto Fill

The Vitalware Auto Fill facility allows all levels in a hierarchy to be filled automatically as soon as sufficient levels have been completed to identify a Lookup List entry uniquely.

For example, we have a hierarchy consisting of:

- Country
- State
- Town
- Postcode

When a postcode is entered, the corresponding town, state and country are populated provided there is only one combination of town, state and country for the given postcode.

When editing a single language in a multi-language environment, the Auto Fill facility handles not only the completion of hierarchies, but also the completion of Lookup Lists.

The following functionality applies to the Auto Fill facility:

- If an entry is selected from a Lookup List in a hierarchy that results in a single combination of values, then all values are assigned to the fields in the hierarchy. When the fields are assigned the entries, the data for all languages is used regardless of the current Data language setting (specified on the Language tab of the Options box). In essence the behavior is the same as if the user had gone to all fields in the hierarchy and selected a Lookup List entry. All levels that currently contain a value are updated with the value from the Lookup List entry. This means that the text in the Lookup List entry replaces the entered text, allowing sites to control the layout of the entry (e.g. text is upper case, or leading upper case, etc.).
- If entering a value in the current Data language setting would result in a single Lookup List entry matching, the complete value for all languages replaces the single language when the control is exited. For example, if we have a Lookup List that contains the entry:

`hat;;chapeau`

and the Data language is set to French, then entering the term `chapeau` and exiting the field will result in the value `hat;;chapeau` being stored in the field. The substitution will only occur if there is no other Lookup List entry for the French word `chapeau`. If another entry exists, or if no entry exists, the text entered is left unchanged. In other words, if the text for a Lookup List entry is entered in the current Data language, the values for all other languages will be added provided a single Lookup List entry matches the text entered. Where a single match exists, the text entered is replaced with the text from the Lookup List entry, allowing the layout of the entry to be determined by the Lookup List entry.

---

## Spell checking

The following functionality applies to spell checking:

- When spell checking is invoked, only the Data language(s) selected are checked. For example, if the Data language has been set to French in an English/French system, only French text will be spell checked. If the data language is set to `All Languages`, then each language is checked in the order defined by the Display Order setting (on the Language tab of the Options box): if text is set to display as French/English, all French text will be checked first, followed by all English text.

---

## Global Replace

The Vitalware Global Replace facility is used to perform changes over a number of records. It provides a mechanism for applying the same update to a selected set of records. The Global Replace facility works by applying a user supplied string or pattern against a particular field, and where matches occur the matching text is replaced with another user supplied value. The important point here is that the string or pattern entered by the user to match against is compared to the data for a given field as it is stored on the server, that is as it is specified in the Language|Supported Registry entry (page 6): any string or pattern supplied for replacement must therefore be in this same order. In order to enforce this restriction, the following functionality applies to the Global Replace facility:

- The Global Replace facility is disabled unless `All Languages` is selected for the language Data setting: that is, the Replace command cannot be invoked when viewing data in a single language.

The reason for the restriction is that any string or pattern used to find text to replace is searched for in the complete field value, not just the current Data language. For example, to replace the word `total` with `aggregate` in an English/French Vitalware system, the Global Replace facility will locate all instances of `total` and replace them with `aggregate` regardless of where in the data the text appears. Hence, where `total` appears in the French text, it is replaced with the English word `aggregate`. This means that a user could change values in a language other than the one they are viewing currently. In order to avoid this issue, the Global Replace facility is not available when viewing a single language.

- The Global Replace facility is disabled when `All Languages` is selected for the Data language setting and where the Display Order language setting is not the same order as that defined by the Supported Registry entry (which is displayed in the System Order field on the Language tab of the Options box (page 17)).

The reason for the restriction is that it may not be possible to translate strings or patterns entered with arbitrary display order settings to values suitable for replacing. For example, in an English/French system with a Display Order of French/English, the string/pattern `total;;` cannot be converted to a single pattern for applying to the English/French data store in Vitalware. The string/pattern means to look for the word `total` where it is the last French word (as it has a trailing language delimiter entered). One possible solution is to translate the string/pattern as `French$` so that French is the last word in the data. However such a string/pattern would match the following data:

- `French`
- `English;;French`

In other words English data may be modified where only French changes were intended. There are a number of other patterns that are also problematic as they cannot be converted to a pattern suitable for use with English/French data. In order to avoid the accidental updating of values not intended to be updated, the Global Replace facility is only enabled for users who are viewing `All Languages` and the language Display Order is the same as that defined by the Supported Registry entry.



Examples of Global Replaces in a multi-language environment are provided in Global Replace: Pattern matching examples (page 38).





## Global Replace: Pattern matching examples

These examples assume a Dual language environment in which data is stored on the server as English and then French.



See Global Replace for details about defining a substitution; see Wildcards in a Global Replace for a description of the wildcard symbols used in these examples.

### 1 Objective

Search the *Series Title: (Title Details)* field for the first occurrence of the word `total` and replace it with the word `amount`.

### Original data

The 'Title Details' form shows the following fields:

- Main Title: (empty)
- Series Title: What is the total;;:Quel est le total
- Collection Title: (empty)
- Alternate Titles: \*
- Title Notes: (empty)

### Substitution

The 'Substitution...' dialog box shows the following settings:

- Field: Series Title: (Title Details)
- Type: Text
- Text to find: total
- Replace with: amount
- Options:
  - ☐ Case sensitive
  - ☐ Whole words only
  - ☒ First occurrence only
  - ☐ Remove blank rows
  - ☐ Regular expression
- Buttons: OK, Cancel, Help, Wildcards...

### Result

The 'Title Details' form shows the following fields after the substitution:

- Main Title: (empty)
- Series Title: What is the amount;;:Quel est le total
- Collection Title: (empty)
- Alternate Titles: \*
- Title Notes: (empty)

### Description

Selecting **First occurrence only** tells Vitalware to search for the first occurrence of the word `total` and replace it with the word `amount` and then stop.

## 2 Objective

This example demonstrates "greedy" patterns in operation. A "greedy" pattern is one which matches the longest string possible. `(.*)` is an example of a "greedy" pattern, although more generally, use of the `*` wildcard will initiate a "greedy" pattern match. When the *Text to find* includes a "greedy" pattern, pattern matching in the target field will find the longest matching sequence.

Here we search the *Series Title: (Title Details)* field for the French word *total* (that is, *total* appears after the language delimiter) and replace it with *montant*.

### Original data

Title Details

Main Title:

Series Title: What is the total;;:Quel est le total

Collection Title:

Alternate Titles: \*

Title Notes:

### Substitution

Substitution...

Field: Series Title: (Title Details)

Type: Text

Text to find: ^(\*::\*)total(\*)\$

Replace with: \1 montant\2

Options

- ☐ Case sensitive
- ☐ Whole words only
- ☐ First occurrence only
- ☐ Remove blank rows
- ☒ Regular expression

Wildcards...

OK Cancel Help

### Result

Title Details

Main Title:

Series Title: What is the total;;:Quel est le montant

Collection Title:

Alternate Titles: \*

Title Notes:

### Description

#### Text to find

`^(.*;;.*)total(*)$`

Entering the text to find (*total*) and expressions between `^` (which indicates the beginning of the field) and `$` (which marks the end of the field indicates that we're looking for (and replacing) the entire contents of the field.

There are two expressions in this example, marked by the brackets:

- `(.*;;;.*)`  
and
- `(.*)`

Recall that the `.*` pattern is a greedy pattern and that it will therefore match the longest possible sequence:

`^(.*;;;.*)`, which is Expression 1, matches everything from the last occurrence of the word `total` to the beginning of the field, i.e.:

What is the total;;;Quel est le

Breaking this down further:

- the first `.*` matches everything from the `;;;` to the beginning of the field, i.e.:  
What is the total
- the second `.*` matches everything from the last occurrence of `total` up to the `;;;`, i.e.:  
Quel est le

Putting these three components together (the data that matches the first `.*`, the `;;;` and the data that matches the second `.*`), Expression 1 is:

What is the total;;;Quel est le

In theory, `^(.*)` would have the same result as `^(.*;;;.*)`, but with this difference: in the second case, the pattern being matched must include `;;;`

The second expression `(.*)` then matches everything from the end of the field up to the word to be replaced, which is the last occurrence of `total`. As it happens there is nothing after the word `total` but if there was, we would have matched it.

### Replace with

`\1 montant \2`

In this usage, the `\` does not perform an escape function (as in `\?` which means treat the `?` as a question mark, not as a character with a special function).

`\1` refers to the first expression in the *Text to find* field: `(.*;;;.*)`

`\2` refers to the second expression in the *Text to find* field: `(.*)`

In this case Vitalware is required to locate and replace:

`^(.*;;;.*)total(.*)$`

with:

`(Expression 1) montant (Expression 2)`

In other words:

`(What is the total;;;Quel est le) montant( )`

## 3 Objective

Search the *Series Title: (Title Details)* field for the French word `est` and replace it with `était`.

**Original data**

Title Details	
Main Title:	
Series Title:	What is the total;;:Quel est le total
Collection Title:	
Alternate Titles:	*
Title Notes:	

**Substitution**

Substitution...		X
Field:	Series Title: (Title Details)	OK
Type:	Text	Cancel
Text to find:	^(.*;;:*)est	Help
Replace with:	\1était	
Options <input type="checkbox"/> Case sensitive <input type="checkbox"/> Whole words only <input type="checkbox"/> First occurrence only <input type="checkbox"/> Remove blank rows <input checked="" type="checkbox"/> Regular expression		
Wildcards...		

**Result**

Title Details	
Main Title:	
Series Title:	What is the total;;:Quel était le total
Collection Title:	
Alternate Titles:	*
Title Notes:	

**Description****Text to find**

`^(.*;;:*)est`

The first thing to notice is that we are not replacing the entire content in the field as our *Text to find* does not sit between ^ and \$.

There is only one expression and it affects data from the word to be replaced (*est*) to the start of the field (again this involves a "greedy" pattern which matches the longest possible sequence).

Our *Text to find* tells Vitalware to match everything from the last occurrence of *est* to the beginning of the field. Breaking this down further:

- the second `.*` matches everything up to the `;;:`, i.e.:  
Quel
- the first `.*` matches everything else up to the beginning of the field, i.e.:  
What is the total

Putting these three components together (the data that matches the first

.\*, the ;;; and the data that matches the second .\*), Expression 1 is:

What is the total;;;Quel

In theory,  $^{\wedge}(.*)$  would have the same result as  $^{\wedge}(. * ; ; : . *)$ , but with this difference: in the second case, the pattern being matched must include ;;;

### Replace with

\1était

\1 refers to the first expression in the *Text to find* field: (. \* ; ; : . \*)

In this case Vitalware is required to locate and replace:

$^{\wedge}(. * ; ; : . *)$ est

with:

(Expression1) était

Anything else in the field after est is left alone.

In other words:

(What is the total;;;Quel) était le total

## 4 Objective

This example demonstrates "greedy" patterns in operation again in a more complex setting.

### Original data

Title Details	
Main Title:	
Series Title:	Language example One;;Language example Two;;Language example Three
Collection Title:	
Alternate Titles:	*
Title Notes:	

### Substitution

Substitution...		X	
Field:	Series Title: (Title Details)	OK	Cancel
Type:	Text	Help	
Text to find:	$^{\wedge}(. * ; ; : . *)$ example(. *)\$		
Replace with:	\1EXAMPLE\2		
Options			
<input type="checkbox"/> Case sensitive <input type="checkbox"/> Whole words only <input type="checkbox"/> First occurrence only <input type="checkbox"/> Remove blank rows <input checked="" type="checkbox"/> Regular expression			
Wildcards...			

**Result**

Title Details	
Main Title:	
Series Title:	Language example One;;Language example Two;;Language EXAMPLE Three
Collection Title:	
Alternate Titles:	*
Title Notes:	

**Description**

If we weren't aware that use of the "greedy" pattern `(.*)` processes a match from the end of the field forwards, we might expect that this substitution would replace the second `example`, giving us:

```
Language example One;;Language EXAMPLE Two;;Language
example Three
```

Instead, the following occurs:

**Text to find**

Starting from the end of the field `(.*)`, which is Expression 2, matches everything up to `example`, i.e.:

```
Three
```

As a "greedy" pattern `(.*)` matches the longest string possible, which in this case is everything from the end of the field up to the last occurrence of `example`, which is the text to be replaced with `EXAMPLE`.

`^(.*;;;.*)`, which is Expression 1, now matches everything from this point to the beginning of the field, i.e.:

```
Language example One;;;Language example Two;;;Language
```

Breaking this down further:

- the second `.*` matches everything up to the last occurrence of `example`, i.e.:

```
Three
```

- the first `.*` matches everything else, i.e.:

```
Language example One;;;Language EXAMPLE Two; Language
```

In theory, `^(.*)` would have the same result as `^(.*;;;.*)`, but with this difference: in the second case, the pattern being matched must include `;;;`

**Replace with**

```
\1EXAMPLE\2
```

`\1` is the first expression, which equates to:

```
Language example One;;;Language example Two;;;Language
```

`\2` is the second expression, which equates to:

```
Three
```

Which gives us:

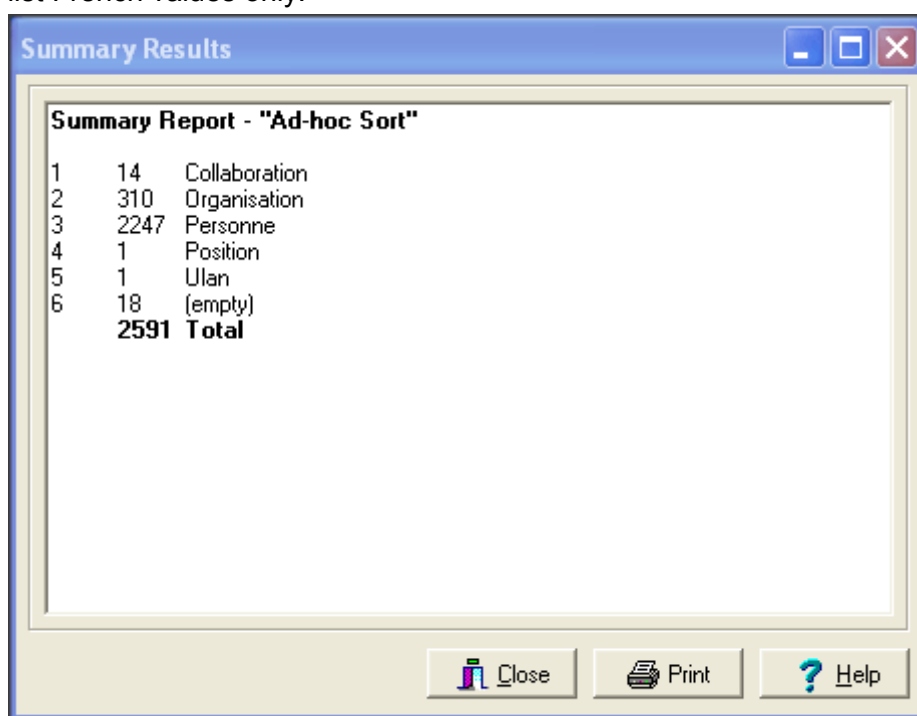
```
Language example One;;;Language example Two;;;Language
EXAMPLE three
```

## Sorting

The Vitalware Sorting facility allows a set of matching records to be sorted based on values in the records. After the sort is complete a summary of each term and the number of times it appears may be displayed.

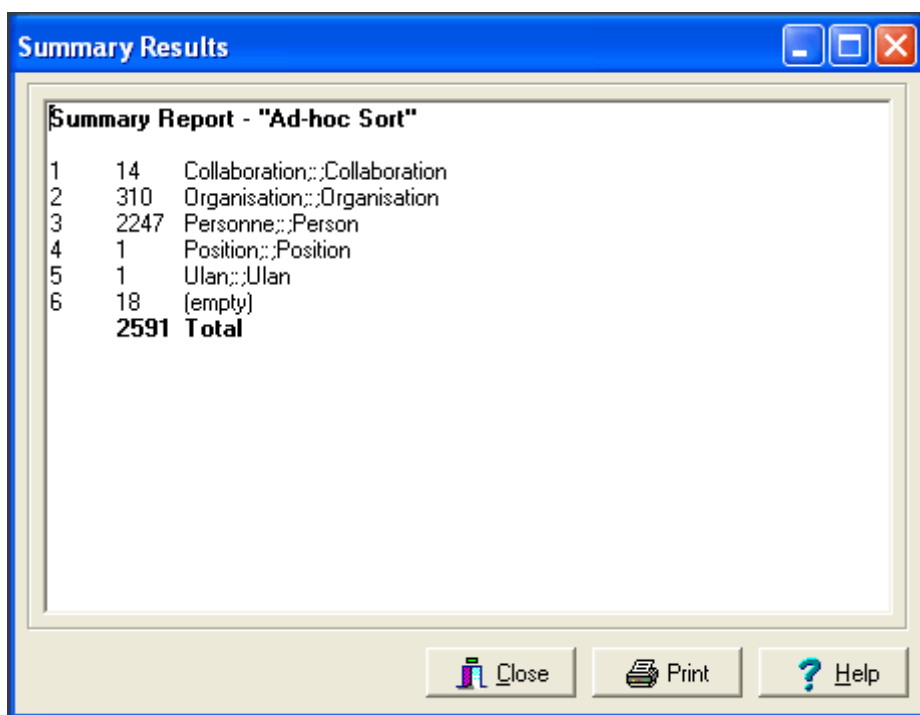
The following functionality applies when sorting records:

- The sorting of multi-lingual fields complies with the setting of the Data language and Display Order options (specified on the Language tab of the Options box). If the Data language option is set to a specific language rather than *All Languages*, the sorting will sort by the language selected and the summary will display terms for the language selected only. For example, in an English/French system with the Data language set to French, the data will be sorted based on the French values only and the summary will list French values only:



If the Data language is set to *All Languages*, the Display Order setting is used to determine in what order the language values should be sorted. For example, if the Display Order option is set to French then English, the sorting will occur with French terms first and where two French terms are the same, the English terms will then be used:





The screenshot shows a window titled "Summary Results" with a blue title bar and standard Windows window controls. Inside the window is a text area containing a "Summary Report - Ad-hoc Sort". The report lists six items with their counts and descriptions, followed by a total. At the bottom of the window are three buttons: "Close", "Print", and "Help".

Summary Report - "Ad-hoc Sort"		
1	14	Collaboration;;Collaboration
2	310	Organisation;;Organisation
3	2247	Personne;;Person
4	1	Position;;Position
5	1	Ulan;;Ulan
6	18	(empty)
<b>2591</b>		<b>Total</b>

- Where a value in one language has multiple values in another language, the summary count for the term will vary depending on the Data Language option selected. For example, the French term `voiture` could have the following English translations:

```
voiture
voiture;;;car
voiture;;;carriage
```

Assume the following number of records contain each value:

```
voiture - 25 records
voiture;;;car - 12 records
voiture;;;carriage - 3 records
```

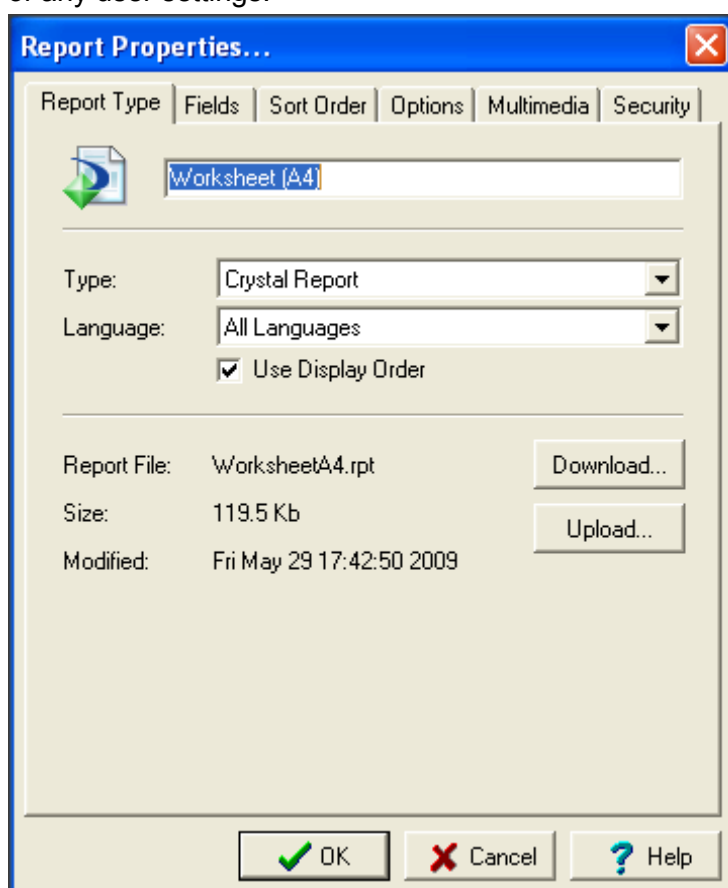
If the Data language is set to French and a summary is produced, the count for the term `voiture` will be the sum of all records containing `voiture`, `voiture;;;car` and `voiture;;;carriage`. Based on our record counts the number of records with the term `voiture` would be 40 (25 + 12 + 3). If the Data language is set to All Languages and a summary is produced, the summary will display the breakdown of each term along with its associated count. In all cases the total number of records will be the same.

## Reports

Vitalware reports are generally designed to display data in a specific language. If a report consists of French prompts, then French data should be displayed. In fact, French data should be displayed regardless of the settings for the Data language and Display Order options (specified on the Language tab of the Options box).

The following functionality applies when producing reports:

- When defining the attributes for a report, the reporting Language may be specified. The language selected determines the data to be embedded in the report, regardless of any user settings:



- If a specific language is selected, the values output for the report will be based on that language. If `All Languages` is selected, then the `Use Display Order` check box determines the order in which the language data is displayed:
  - If unchecked, the data is output in System Order as defined by the Supported Registry entry.
  - If checked, the data will be output based on the current setting of the Display Order option.

In most cases the `Use Display Order` option is not checked since this results in the data being embedded in a predictable order. The main exception is a report designed for use in Page View mode. In this case the `Use Display Order` option should be turned on

so that the data displayed matches the user's current settings.

- If a Sort Order is defined for the report, the sorting uses the same options as those defined for the report. In other words, the report Language selected and the Use Display Order setting define what values are used when sorting the records for the report. It is not possible to define a sort order independently of the report language settings (it is hard to imagine a case where this would be desirable).

---

## Page View mode

Page View mode provides a mechanism for viewing HTML based reports in the Vitalware client.

The following functionality applies when in Page View mode:

- Since Page View mode uses a report registered in Vitalware, the data shown reflects the settings of the report not the settings for the Data and Display Order options (specified on the Language tab of the Options box). This allows reports to be designed to reflect how the data is to be displayed regardless of the current Language Settings.
- The Default Page View report always displays all languages in System Order, which is easily checked on the Language tab of the Options box (page 17). The default report provides a useful way of showing the text for all languages regardless of the current Language Settings.

---

## Scheduled Exports

The Scheduled Export facility allows data to be exported from Vitalware on a regular basis. The data is generally fed into third party systems.

The following functionality applies when exporting data:

- When defining Scheduled Export settings, it is not possible to set the language to be exported. In all cases, all languages will be exported in System Order as defined by the Supported Registry entry, which is easily checked on the Language tab of the Options box (page 17).
- If a data export is required for a particular language, then an export filter is required. The filter can parse the data and rewrite it with the language required. Using an export filter allows the data to be manipulated on a per column basis, enabling the data to be massaged to suit any third party system.
- If a Sort Order is defined for the export, the data is sorted based on the complete contents of the column.

---

## Imports

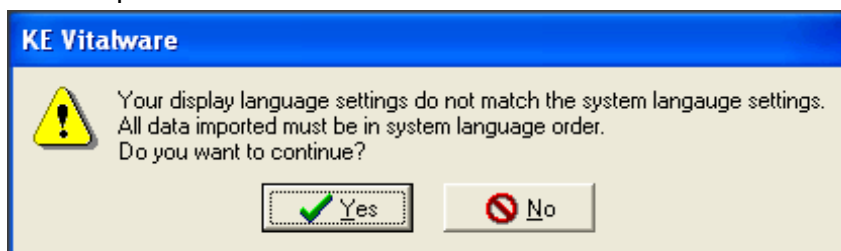
The Import facility allows data to be taken from an external source in either CSV (Comma Separated Values), Tab (Tab Delimited Values) or XML (eXtensible Markup Language) format and loaded into Vitalware.

The following functionality applies when importing data:

- When importing data the user's Data language and Display Order options (specified on the Language tab of the Options box) are ignored. The data value can contain all languages. The language order is in System Order as defined by the Supported Registry entry, which is easily checked on the Language tab of the Options box (page 17).

In other words, the way that multi-lingual values are specified for data import is fixed, regardless of any user settings. This allows the same data file to be imported by different users with different settings but have the same records with the same language order created.

- If the Display Order of languages does not match the System Order of languages, or if a single language is displayed, and an import is commenced, a message displays indicating that all data imported must be in the System Order. The user may choose to abort or proceed:



# Index

Auto Fill • 23, 34	<b>A</b>	Searching • 23, 27
		Show Empty Delimiters Registry entry • 5, 10, 12, 14
		Show First Filled Registry entry • 3, 5, 13, 14, 24
		Show Trailing Delimiters Registry entry • 5, 10, 12, 14, 25
		Sorting • 23, 44
		Spell checking • 23, 35
Copy and Paste • 23, 26	<b>C</b>	Supported Registry entry • 1, 5, 6, 10, 14, 20, 24, 27, 36
	<b>D</b>	
Data entry • 23, 24		
Default values • 23, 29		
Delimiter Registry entry • 5, 8, 12, 14, 27		
	<b>E</b>	
Edit Any Language Registry entry • 5, 9, 14		
Editing in a single language • 23		
	<b>G</b>	
Global Replace • 23, 36		
Pattern matching examples • 37, 38		
	<b>I</b>	
Imports • 20, 23, 50		
	<b>L</b>	
Lookup Lists • 3, 23, 31		
	<b>M</b>	
Multiple Languages Registry entry • 5, 14		
	<b>O</b>	
Options • 1, 2, 6, 13, 17, 24, 26, 31, 36, 48, 49, 50		
Overview • 1		
	<b>P</b>	
Page View mode • 23, 48		
	<b>R</b>	
Registry settings • 5		
Reports • 23, 46		
	<b>S</b>	
Scheduled Exports • 23, 49		